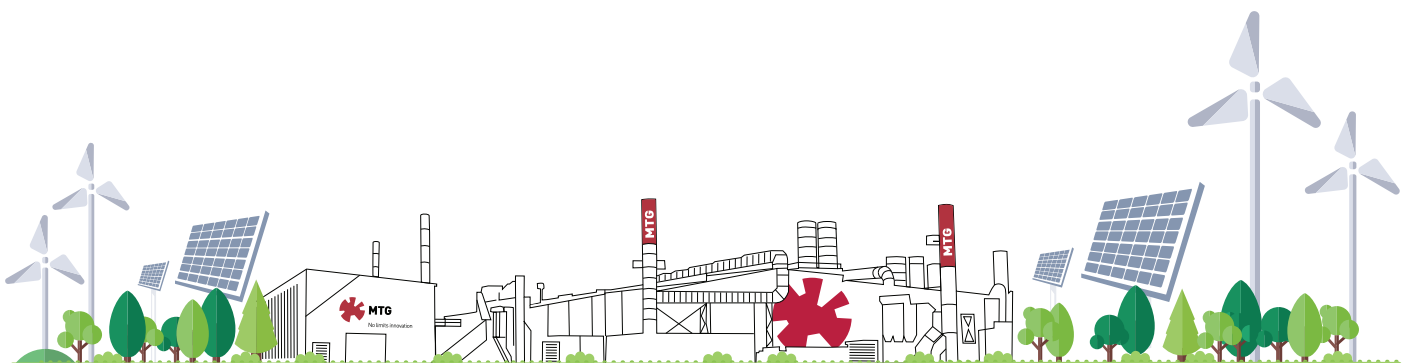




# Product Environmental Report

**MTG SYSTEMS and MTG PLUS**  
*2025*



# Index

Introduction into MTG Sustainability Plan .....	3
Source materials .....	4
Manufacturing .....	5
Pack and ship .....	6
Use .....	7
Re-use .....	8

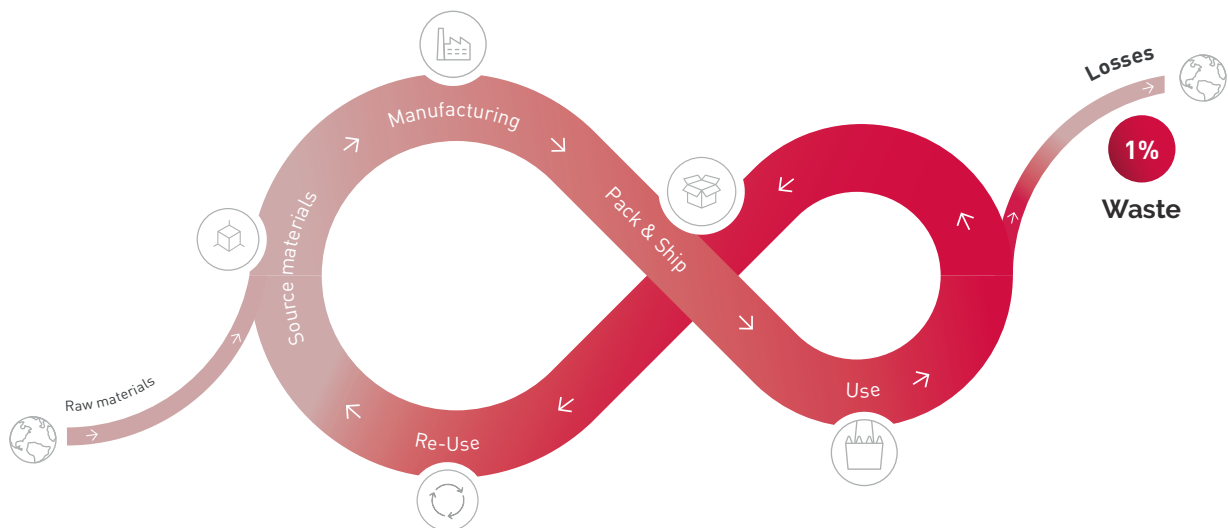
# Introduction into MTG Sustainability Plan

Since its beginnings, MTG has always been committed to **environmental protection and energy efficiency**, as evidenced by holding an **ISO 14001** certification since 1999, the annual results of energy audits and the efficiency indexes already achieved in comparison with the "Best Available Techniques Reference Document" of foundries in Europe.

In 2021 MTG initiated the **Paris Agreement adherence program on climate change**, to accompany our customers and end users in minimizing their carbon footprint.

MTG is now developing a Sustainability Plan taking a leap forward in its commitment to action and transparency, which periodically will be communicating objectives and the progress made, in order to share our achievements with the different stakeholders.

Let's start with this document to get an overview of our holistic product environmental lifecycle, a **sustainable double circle for every stage of our products, aligned with a circular economy model of production and consumption**.

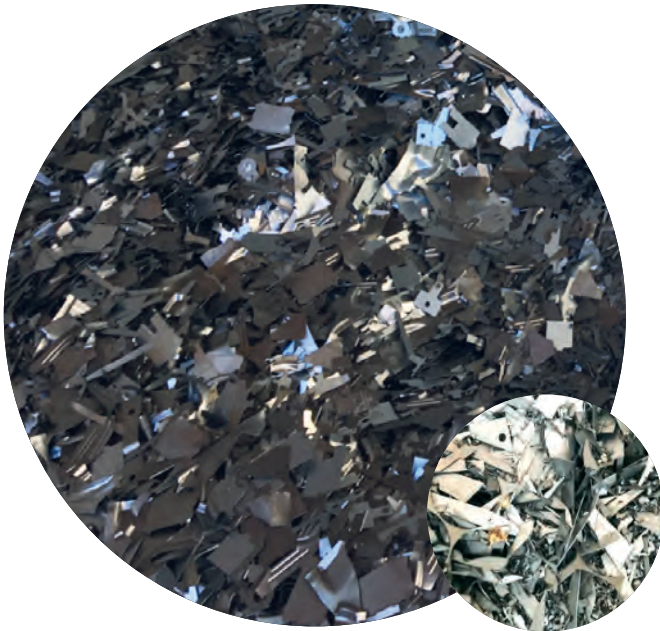




## Source Materials

**Our products are 100% steel. MTG steel basically is an alloy of iron and carbon containing less than 0,4% carbon.**

Iron is the 4<sup>th</sup> most common element in the Earth's crust after oxygen, silicon and aluminium. In MTG steels, iron comes from scrap.



### 100% Recycled

Our scrap is a 100% recycled and clean<sup>1</sup> material coming from the automotive sector and represents more than 95% in our composition<sup>2</sup>. Other materials such as aluminum and nickel could come also from recycled sources.

### MTG solutions fulfill the definition of 'article' according to REACH.

REACH (EC 1907/2006) aims to improve the protection of human health and the environment through the better and earlier identification of the intrinsic properties of chemical substances. Manufacturers and importers are required to gather information on the properties of their chemical substances, which will allow their safe handling, and to register the information in a central database in the European Chemicals Agency (ECHA) in Helsinki. The Regulation also calls for the progressive substitution of the most dangerous chemicals (referred to as "substances of very high concern") when suitable alternatives have been identified.

<sup>1</sup> The scrap comes clean of oils and coolants, avoiding the emission of carbon compounds in its fusion.

<sup>2</sup> On average new steel products contain 30% recycled steel worldwide.

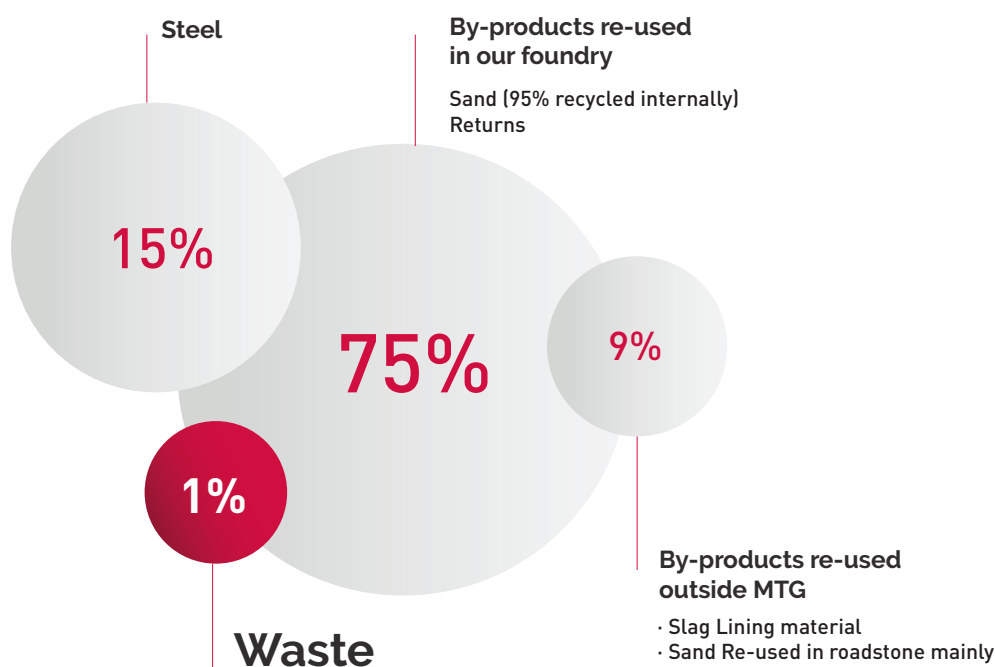


## Manufacturing

MTG products are made in our own foundry according to the European manufacturing standards in terms of health, safety and environment. BREF<sup>3</sup> ratios in MTG are among the best in the sector.

- ✓ An electric arc furnace<sup>4</sup> can be charged with 100% scrap steel.
- ✓ To produce one ton of steel we only need 500 KWh<sup>5</sup>.
- ✓ 67 % of the consumed electricity comes from clean sources.
- ✓ Management regulation system for electricity consumption controls the parameters in the installation.
- ✓ Direct CO<sub>2</sub> emissions in our electric arc furnace are mainly associated with the consumption of the carbon electrodes and has a negligible value, that in MTG represents less than 1% of our scope 1 emissions.

### Production output in weight



We are certified with ISO14001 since 1999 and ISO45001 since 2016. 10% of the total investment in Monzón is related to Safety and Environment. Fabric dust filters in MTG have a collection efficiency rate of more than 99% even for small size particles (10mm). An energy audit is conducted on a yearly basis to check our efficiency ratios and potential improvements.

<sup>3</sup> Best Available Techniques Reference Documents (BREFs) are reference reports developed in the European Union to describe industrial processes, emission and consumption levels of applied techniques, and best available techniques for integrated prevention and control of pollution from industrial activities.

<sup>4</sup> Not all the furnaces can use scrap. Induction furnaces, the most common type in foundries, must melt the final composition, so scrap is not used.

<sup>5</sup> According to BREF, values on average range from 500 to 1200 KWh per ton.



## Pack & Ship

**We have eliminated 100% of plastic use in our packaging, which can be fully recycled avoiding waste generation.**

Materials such as wood and carton are used to handle our parts.

- ✓ Nearly 100% of the carton used is recycled.
- ✓ Pallets are 100% made of recycled wood.
- ✓ The wood used for the rest of the packaging comes from responsibly managed forests which ensure working forests are able to regrow and continue to clean our air and purify our water.

We encourage our customers to use full trucks or FCL containers to increase efficiency transport ratios. 87,4% of our transport is done in full containers or trucks. Intercontinental deliveries are done by vessel, considered nowadays the most efficient means of transport.

### Transport mix

**56,1%**

Full container load

**31,3%**

Full truck load

**0,4%**

Airfreight

**12,2%**

Groupage and others





## Use

MTG high-quality ground engaging tools for earth-moving machinery are designed and manufactured to provide our end users with the utmost performance, increasing its operation efficiency in up to 25%.

Each application and site conditions in Mining, Construction and Dredging operations require specific G.E.T. solutions to ensure **safety, reliability and durability**. To that end, both Product Engineering and Product Manufacturing are a key factor.

## The utmost performance: less downtimes and higher operating efficiency



### Safety

People's safety first

- ✓ 78% of our product lockings are hammerless > easy and safe assembly and disassembly for quicker change-outs. The remaining 22% are phase-out products.
- ✓ In less than 3 seconds > our GET DETECTION, the first series of DIGGING INSIGHTS, alerts our end users of any GET detachment that may happen, thus preventing that any steel element can end up in the crusher.

+



### Reliability

It's a matter of trust

- ✓ MTG products are highly reliable to avoid unplanned downtimes. Claims related to GET failures/breakages represent less than 0.03% of total units sold.
- ✓ Manufacturing procedures follow the highest standards.

+



### Durability

Designed to last

- ✓ MTG ranks #1 for longer operational time thanks to the best wear material ratio.
- ✓ Best combination between design and steel properties provides more penetration and less energy consumption.

**+25 %**  
In operating  
efficiency



## Re-use

All our worn parts are 100% recyclable with non-hazardous waste.

### A circular economy



Steel is 100 % recyclable



Our GET too

### Our waste is steel

- ✓ Steel is infinitely and fully recyclable with no loss of quality in most cases.
- ✓ Steel is not only a vital material, but also one with leading circularity credentials.
- ✓ Steel is an iron-based metal alloy that uses few alloying elements, as many of its properties are achieved through thermal treatment. Most alloying elements can be removed in the remelting process, rendering steel as one of the most versatile materials to recycle into equivalent products.

### One step further in circular economy

- ✓ Our end users have strict policies in terms of sustainability. This means they will make sure that the remnants of worn parts go into the recycling loop. With some of them, either directly or through our distribution network, we have established agreements for the collection of worn parts, taking care of their reuse.
- ✓ MTG best wear ratio minimizes the amount of scrap disposal management.
- ✓ MTG's GET does not require disassembly to be recycled.
- ✓ All MTG new locking systems are free of polyurethane, made with metal, making it even easier to recycle.





[mtgcorp.com](https://mtgcorp.com)



Follow Us  
on LinkedIn

#### MTG HEADQUARTERS

📍 Carrer d'Àvila, 45  
08005 Barcelona (Spain)  
☎ +34 93 741 70 00  
✉ [info@mtgcorp.com](mailto:info@mtgcorp.com)

#### MTG NORTH AMERICA

📍 4740 Consulate Plaza Drive  
Houston, TX 77032 (USA)  
☎ +1 (281) 872 1500  
✉ [info.na@mtgcorp.com](mailto:info.na@mtgcorp.com)

#### MTG AUSTRALIA

📍 16 - 18 Thorpe Close  
Welshpool, WA, 6106 (AUS)  
☎ [+61] 437 101 608  
✉ [info.au@mtgcorp.com](mailto:info.au@mtgcorp.com)

#### MTG Quality Certificates



MTG-PER-EN-052026